

Driving Directions to AMI Metals, Ankara

TEM Çevre Yolu İstanbul yönünde ya da Eski İstanbul yolu üzerinde TAI çıkışından sonra Karayolları Bakım İşletme Şefliği ve A101 levhalarını izleyerek tesisimize ulaşabilirsiniz.

FROM ANKARA CENTRE, NORTH OR NORTH EAST OF ANKARA, OR ESENBOGA AIRPORT (the red line on the map at the bottom), take the E90/D750 road West **towards** Istanbul.



Join the E89 **towards Istanbul**, and then continue to follow the road north for 7km.

Take the turning for “TAI”, “Karayolları Bakım İşletme Şefliği”. After 200m turn right at the first ‘T’ junction, and follow signs to ‘A101’. When the ‘A101’ building is on your left, you will see the AMI Metals facility directly in front of you.

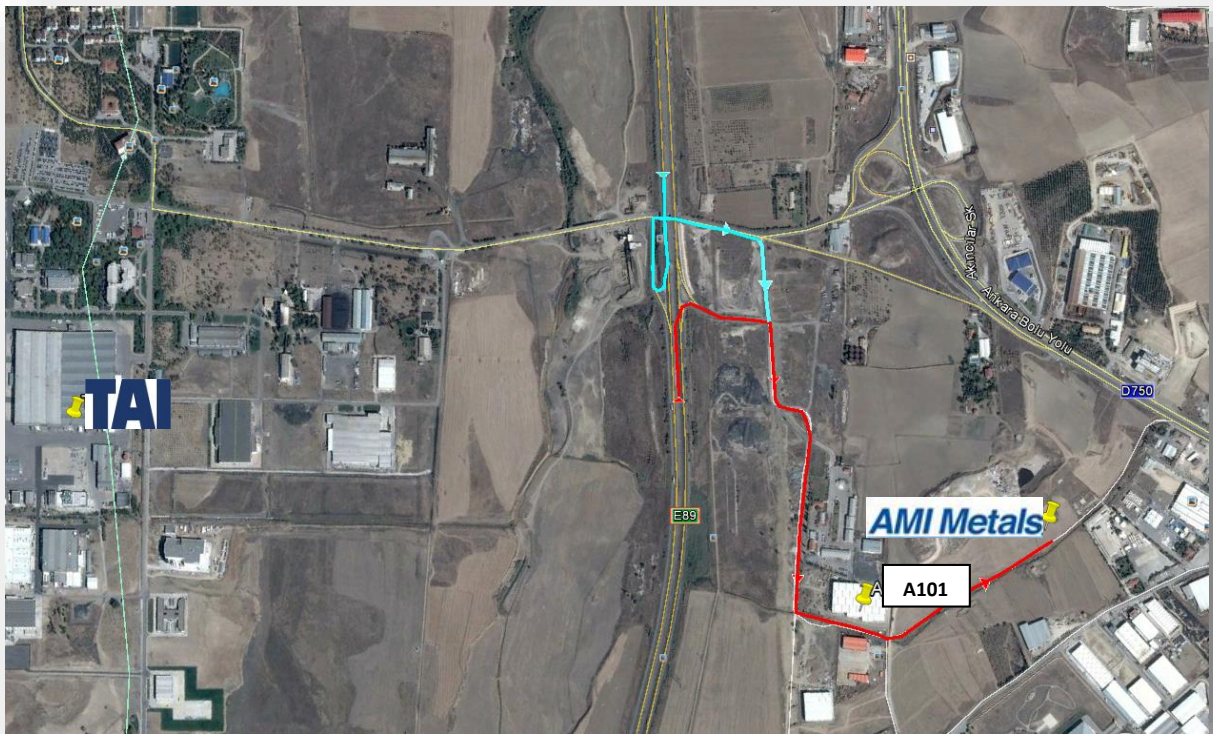
FROM SOUTH AND SOUTH WEST OF ANKARA (the red line on the map below), follow the E89 to the West of Ankara **towards Istanbul**.

Take the turning for “TAI”, “Karayolları Bakım İşletme Şefliği”. After 200m turn right at the first ‘T’ junction, and follow signs to ‘A101’. When the ‘A101’ building is on your left, you will see the AMI Metals facility directly in front of you.

FROM ISTANBUL AND NORTH WEST OF ANKARA (the blue line on the map above), follow the E89 to Ankara, taking the exit for “TAI”, “Karayolları Bakım İşletme Şefliği”.

Turn right at the ‘T’ junction, which will take you back under the freeway. After 200m take the first turning on the right, and follow the signs to ‘A101’.

When the ‘A101’ building is on your left, you will see the AMI Metals facility directly in front of you.



If you have any problem finding us, please call Uner Karakullukcu on +90 5324148861